

PANUI NEWSLETTER



HIGHLIGHTS THIS WEEK

TODAY! THE SHORTEST DAY!
CACTUS ONE WEEK TO GO!

Attendance % 79

PRINCIPALS MESSAGE



Kia ora koutou katoa! This weeks panui is brought to you by the age old phrase...a picture paints 1000 words! With the term reaching its end we are all nearly out of words so will let the pictures show the story of this week. I am currently sitting in the gym with the World vision crew (pictured) smashing out 40 of a whole lot of exercises....they are loving it.....It has been great to hear about whanau meeting with teachers to talk about learning and reports and all the important stuff that creates a great learning environment...so it is not too late to come in and talk education with our staff; just make an appointment and come on in. Thats it from me...I have some burpees to hand out! Make sure you come down and celebrate matariki with us on Wednesday eating at 6pm in the hall....Have a warm safe weekend!

KEY DATES

Week 9 (24th - 28th June)

Monday - normal school day

Tuesday - normal school day

Wednesday - Matariki evening (see pg. 3)

Thursday - normal school day -Cactus longest day!

Friday - school is closed (MATARIKI HOLIDAY)

Taku Wairua

by **THE WATERBOY**

We are excited to announce that all Year 10s will be participating in Taku Wairua for one period each Wednesday of next term.

Taku Wairua is a personal development programme designed to help young people be the best version of themselves. We will have guest speakers along and finish the term with an excursion! Next week all parents and caregivers of Year 10 students will receive an information booklet. Inside this booklet is a permission to participate form. You need only return the form for two reasons: you do not wish your child to participate or you do not give permission for photos or videos to be taken of your child's participation in the programme.

Steve - Pathways Hub - [yuss!](#) AgHort P5 to N2

Wednesdays	10A	10B	10C
Period 3	MAT - NUK, N6	SOC - SCu, N3	SCI - KSu, S3
Period 4	SCI - JAr, S1	ENG - RRe, N2	ENG - JBe, N4
Period 5	MAO - THi, A2	MUS - ABe, Music	ART - LNi, Art room

The Four Pillars



Belonging



Self Discovery



Goal Setting



Citizenship



STUDENT OF THE WEEK

Junior: uniors: Niary Black -ATa- For her work ethic and positive attitude in core class

Middle: Alex Bernard -RRo -For producing a great piece of work in enrichment

Senior: Joseph Cole -JAr -For patiently supporting others with their learning



PUTARURU COLLEGE

Matariki



COME ALONG WITH YOUR WHĀNUA TO CELEBRATE MATARIKI AT PUTARURU COLLEGE KAI PROVIDED. QUIZ & A PERFORMANCE FROM TE RŌPŪ WHAKANGAHAU.

WEDNESDAY 26TH JUNE FROM 5:30PM KAI TAHI 6PM

MATCH RESULTS

PC JUN VS MATAMATA JNR PR

21L-68

NEXT UP: TBC
MVP - HARKEN BESANDE

PC SEN VS TA SNR DEV

76W-41

NEXT UP: FINALS TBC
MVP - XAVIER NICHOLLS



INTER SCHOOL CLUSTER ORIENTEERING

AWARD

TOP YEAR 7 & 8 TEAM

PUTĀRURU COLLEGE OMEGA

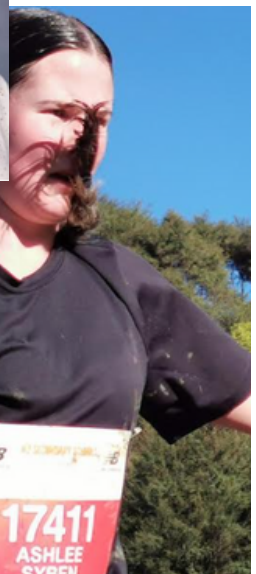
Fabian Bougher, Madison-Drew Marsh, Jah-Leah Winikerel, Kobe Petley

Time: 19.10 18/18

DATE: June 27th 2024 SIGN: Whaea Stacy



Tough Guy/ Gal 2024



CONTACT US

Facebook
Email
Website

www.putarurucollege.school.nz

Office hours
8am - 4.30pm

Phone
07 883 8323

