



SUBJECT CHOICE GUIDE

2024

LEVEL 2, NCEA

LEVEL 3, NCEA



Welcome to Subject Selection for 2024!

Students at Putāruru College can choose from a range of subjects aimed at meeting their interests, passions, academic needs and identified pathway requirements.

It is important for whānau to be part of this process and support their young person to balance subject choices by keeping future pathways open and selecting subjects for enjoyment and interest.

We invite you to kōrero with your young person's whānau teacher, Pou Ārahi, Learning Leaders and our Pathways Team in your decision-making for 2024. While NCEA changes will not affect Level 2 and 3 in 2024, we have included in the following pages, an outline of the changes that have been made to strengthen NCEA.

Should you like to make contact with us directly, you can email using the addresses below:

Leaders of Learning		
Arts and Technology	Linda Nicholson	linda.nicholson@putarurucollege.school.nz
English	Melissa Miller	melissa.miller@putarurucollege.school.nz
Maths	Robyn Clark	robyn.clark@putarurucollege.school.nz
Science, Health, Outdoor and Physical Education (SHOPE)	Katelyn Schick	katelyn.schick@putarurucollege.school.nz
Social Sciences and Languages	Suzanne Curphey	suzanne.curphey@putarurucollege.school.nz

Pathways and Partnerships DP	Kate Robins	kate.robins@putarurucollege.school.nz
Careers Advisor Gateway Coordinator STP Coordinator	Steve Abernethy	steve.abernethy@putarurucollege.school.nz
Pathways Support	Chris Stokes	pathways@putarurucollege.school.nz
Kōtui Ako e-Dean	Kim Spencer	kim.spencer@putarurucollege.school.nz
Pou Ārahi Waimakariri (WM)	Liz Hunter	liz.hunter@putarurucollege.school.nz
Pou Ārahi Pokaiwhenua (PK)	Tiniwaata Hill	tiniwaata.hill@putarurucollege.school.nz
Pou Ārahi Oraka (OR)	Jade Argent	jade.argent@putarurucollege.school.nz
Pou Ārahi Waihou (WH)	Max McLaren	max.mclaren@putarurucollege.school.nz

Important Dates for 2023

Week 7 31 st August	Subject Selection Evening in the library Discussions with Learning Leaders, Subject Teachers and Student Leaders
Week 8	NCEA Practice Exams
Week 9	All Subject Selections made on School Point
Week 10	Subject Selection conversations
	2024 Timetable created, clashes identified
Term 4	Course Confirmation

National Certificate in Educational Achievement (NCEA)

- Credits for National Certificates are gained by completing either Achievement Standards and/or Unit Standards
- There are four possible grades for the awarding of every Achievement Standard: Not Achieved, Achieved, Merit and Excellence.
- Unit Standards can be assessed in the same way however, not every Unit Standard assessed for vocational focused skills and knowledge has merit or excellence criteria. For some Unit Standards, Not Achieved and Achieved are the only possible grades.
- All Unit Standards and some Achievement Standards are internally assessed. Some Achievement Standards are assessed externally with examinations at the end of the year.

Level One

- 80 credits including:
 - 10 Literacy
 - 10 Numeracy

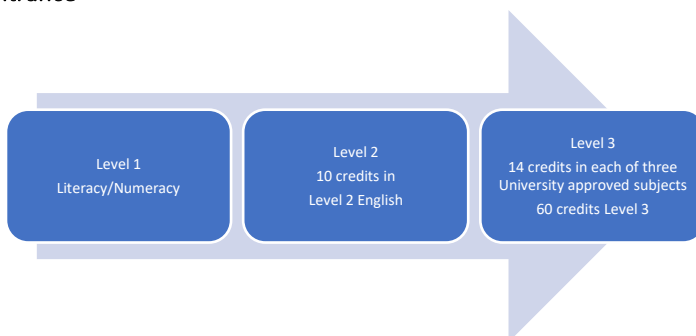
Level Two

- 80 credits including:
 - 60 credits at Level 2
 - 20 credits from Level 1 or above

Level Three

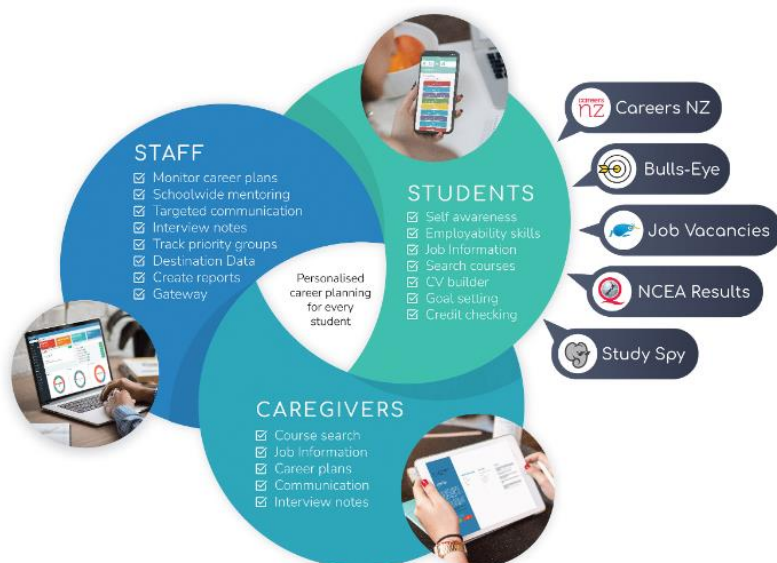
- 80 credits including:
 - 60 credits at Level 3
 - 20 credits from Level 2 or above

University Entrance





Putāruru College has partnered with Career Central allowing whānau to log on with their student to use as a tool for career conversations and planning to take place at home.



How it works - Student log on cc.school.nz.

We use Career Central for student career assessment and planning. Students are able to engage with a range of content which will support them to build their career self-awareness, explore opportunities and make decisions about their post-school options.

The student dashboard provides modules on skills, personal qualities, career values, and interests as well as an online CV builder. Students can also complete career quizzes and undertake future focused planning around subject selection, post school courses and study, employability skills, goal setting and school leaver readiness.

Pathways to Employment

Gateway

At Putāruru College, we are funded by the Tertiary Education Commission (TEC) to provide senior students access to structured workplace learning, integrated with school-based learning. Students' learning may be assessed in the workplace and they can achieve credits on the New Zealand Qualifications Framework (NZQF) towards their National Certificate of Educational Achievement (NCEA).



Gateway is designed to support school students' transition into the workforce by offering them workplace learning while at secondary school. This includes a formal agreement (like an individualised learning plan) between the school, the student and the workplace.

Gateway aims to assist students to become independent learners and choose a learning programme suitable for their individual's career pathway. Gateway is available for students interested in a particular career or industry. Students will need to be self-motivated, well-organised with a positive attitude and capable of maintaining their school subject's requirements, while they are away from school on a Gateway work experience placement.

Gateway students are required to gain a minimum of 20 credits throughout the academic year. Students spend approximately one day per week, ideally over 10 weeks, in a workplace appropriate to their interest.

Secondary-Tertiary Programmes

Putāruru College is fortunate to work alongside Toi Ohomai | Te Pūkenga. Popular with our students is the Trades or Futures Academy in which students attend courses each week to gain credits which contribute to NCEA, as well as a Vocational Pathway Endorsement Award.

If you are interested in gaining further industry knowledge and experience, the Futures Academy may be for you. See Mr Abernethy, our STP Coordinator for a conversation to discuss courses available in 2024.



Te Pūkenga



Kōtui Ako

VIRTUAL LEARNING NETWORK AOTEAROA

As a small rural secondary school, we are not always able to offer subjects our ākonga wish to study. Kōtui Ako provides the ability for our students to take up a subject that they are passionate about alongside other ākonga from across Aotearoa New Zealand with a specialist teacher in the area.

Kōtui Ako takes place in our dedicated e-learning suite or VC room as it is commonly called. Zoom classes are 1 hour every week and often use Google Classroom as a platform for ākonga learning outside of the Zoom lessons. Learning in this way requires a high degree of self-discipline, motivation and self-management. Pastoral care is provided for these ākonga by our e-Dean, Kim Spencer.

There are a wide range of subjects on offer, including languages, social sciences including legal studies, psychology, and business subjects, such as, accounting and economics. Should you wish to make further inquiries about Kōtui Ako, please contact Kim Spencer by emailing kim.spencer@putarurucollege.school.nz.



SUBJECT SELECTION

There is so much to consider when you are picking your subjects.

SO... it is important that you have thought about it, discussed it with others and importantly chosen things that suit YOU and YOUR future

QUESTIONS TO START WITH:

- What do I enjoy now?
- What am I good at?
- What does my future look like?
 - Do I have a job in mind yet? What could be helpful for that?
 - Do I want to go to university or a course? What do I need for it?
 - How could I leave my options open if I don't know?

SPEAK WITH OLDER STUDENTS!

What did they like last year?
What taught them the most?

SPEAK TO THE TEACHERS!

Talk to them about what you will learn and how you will learn in the course

TRY SOMETHING NEW

What subjects can you now try as a senior?

TALK TO SCHOOL LEAVERS!

Talk to others who are working and studying.

What do they suggest taking?

What has helped them in their jobs/study?

JOB

PLAN YOUR

Future

Speak to your whānau teacher, careers advisor, Pou Ārahi & your whānau about your plans for the future.

What do you need for your job, study or university?

Subject Selection Planning Sheet

Name:

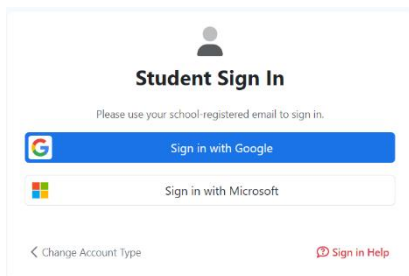
Whānau:

What subjects do I like?	Subjects I am strong in...
Interests and achievements outside of school?	What does my whānau hope for me?
What is important to me?	My dreams and aspirations beyond school...
What are my top 3 personal attributes?	What am I working on?

Year 12	Year 13

Course Selection on School Point

Please log on to SchoolPoint at <https://login.bridge.school.nz> using your school login and password.

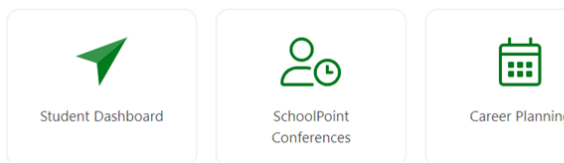


The 'Student Sign In' page features a user icon at the top. Below it, the text 'Please use your school-registered email to sign in.' is displayed. There are two main buttons: a blue 'Sign in with Google' button and a white 'Sign in with Microsoft' button. At the bottom left, there is a link to 'Change Account Type', and at the bottom right, there is a red 'Sign in Help' link.



The 'SchoolBridge SIGN IN' page has the SchoolBridge logo at the top. Below the logo, it says 'SIGN IN' and 'Please choose your account type'. There are three buttons: 'Caregiver' (with a family icon), 'Student' (with a person icon), and 'School Staff' (with a person icon). At the bottom right, there is a red 'Sign in Help' link.

Click on Student Dashboard.
At this point you may have to
log in again (Small login button
top right of page).



Three navigation buttons are shown: 'Student Dashboard' with a green arrow icon, 'SchoolPoint Conferences' with a green icon of two people and a clock, and 'Career Planning' with a green calendar icon.

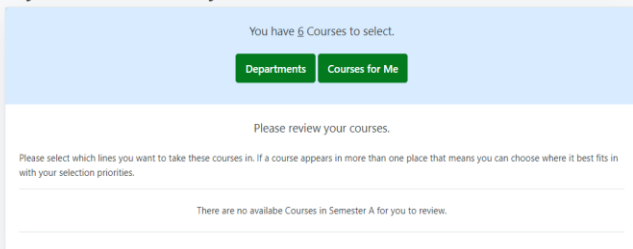
Once in, go to My Courses on
the left hand side.

From here you can look at the
courses available either by
Department or Courses for Me
which will show all courses.

If you wish to take a particular
subject click the large green
button Select as one of my
Courses.

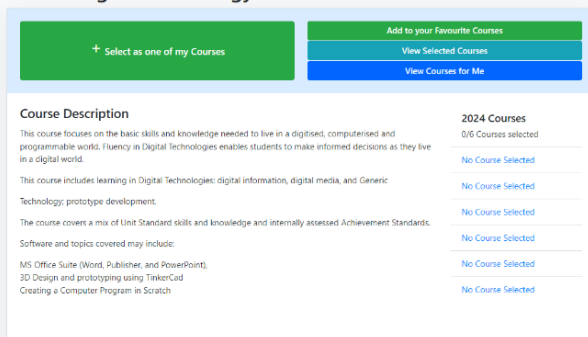
Repeat until you have the 6
(SIX) courses you wish to do in
2024 selected.

My Course Summary



The 'My Course Summary' page has a 'Home' button in the top right. It shows 'You have 6 Courses to select.' with two buttons: 'Departments' and 'Courses for Me'. Below this, it says 'Please review your courses.' and 'Please select which lines you want to take these courses in. If a course appears in more than one place that means you can choose where it best fits in with your selection priorities.' At the bottom, it states 'There are no available Courses in Semester A for you to review.'

Level 1 Digital Technology



The 'Level 1 Digital Technology' page has a 'DTC100' label in the top right. It features a large green button 'Select as one of my Courses' and two smaller buttons: 'Add to your Favourite Courses' and 'View Selected Courses'. Below these are two more buttons: 'View Courses for Me' and 'View Courses for Me'. The 'Course Description' section includes text about digital skills, learning in Digital Technologies, and topics covered. The '2024 Courses' section shows '0/6 Courses selected' and a list of 'No Course Selected' for each of the six courses.

Contents

Agricultural and Horticultural Science Trades Academy	1
Arts and Technology	2
Digital Technology	2
Food Technology	3
Hard Materials Metal Technology	4
Hard Materials Wood Technology	5
Painting and Printmaking	6
Photography	7
English	8
English	8
Mathematics	9
Mathematics	9
Statistics	9
Calculus	10
Science, Health, Outdoor and Physical Education	11
Biology	11
Chemistry	12
Science	13
Physics	14
Outdoor Education	15
Physical Education	16
Social Sciences and Languages	17
Classics	17
History	18
Humanities	19
Tourism	20
Te Reo Māori	21

Agricultural and Horticultural Science Trades Academy - AgHort

This is a practical course focussing on planting and cultivating crops (vegetables, herbs and other plants). The class is combined (Level 1 and 2 together) and students work across 2 years to complete the New Zealand National Certificate in Horticulture (Level 2).

Internal 45	External	L1 Literacy 3	L1 Numeracy	UE Reading	UE Writing	Endorsement
<p>Prerequisites: A willingness to get into the garden (60% of the course is practical)</p> <p>What pathways does this subject lead to: Graduates of this programme will have the skills and knowledge to obtain entry level roles in the primary industry, for example orchard worker, relief milker, assistant gardener, general farm hand, etc.</p> <p>Subject Specific Requirements: Nil</p> <p>Key Skills gained: This course mainly focuses on developing your understanding of the interconnectedness between people, soils, water, climate, plants, and animals.</p>						
<i>Course relationship to the National Vocational Pathways</i>						
Construction & Infrastructure	Manufacturing & Technology	Primary Industries	Services Industries	Social & Comm Services	Creative Industries	

* * *

Arts and Technology

Digital Technology – DTC200

This course provides hands-on training and the opportunity to gain skills and knowledge in a range of standards taken from the Digital and Generic Technologies matrix. In Terms 1 & 2 we will be completing Unit Standards, teaching you specific digital technology skills. In terms 3 & 4 we will be working on Achievement Standards and will be used towards a community project.

Internal 18	External	L1 Literacy	L1 Num	UE Reading	UE Writing	Endorsement
Prerequisites: Nil What pathways does this subject lead to: Level 3 DTC, every job that exists now, and in the future, including advertising and marketing, architecture, construction, creative design, culture and heritage, defence and more! Subject Specific Requirements: Able to work independently Key Skills gained: Level 2 NCEA, MS Word, MS Publisher, MS Excel						
<i>Course relationship to the National Vocational Pathways</i>						
Construction & Infrastructure	Manufacturing & Technology	Primary Industries	Services Industries	Social & Comm Services	Creative Industries	

* * *

Digital Technology – DTC300

Students will build upon their previous experiences in preparation for employment, media industries, business, design, administration or tertiary studies. It will provide training and the opportunity to gain skills and knowledge in a range of standards taken from the Digital and Generic Technologies matrix.

Internal 16	External	L1 Literacy	L1 Numeracy	UE Reading	UE Writing	Endorsement
Prerequisites: Nil What pathways does this subject lead to: Level 3 DTC, Education, Engineering, Finance, Health, Information Technology, Infrastructure, Manufacturing, Retail, Telecommunications, etc. Subject Specific Requirements: Able to work independently. Key Skills gained: Level 3 NCEA, MS Calibre, Conceptual Design, creating media outcomes, problem solving, File Management						
<i>Course relationship to the National Vocational Pathways</i>						
Construction & Infrastructure	Manufacturing & Technology	Primary Industries	Services Industries	Social & Comm Services	Creative Industries	

Food Technology – FTE200

Hospitality Unit Standards predominantly at level 2 are more industry focused and students can further extend their knowledge, skill level and practical application. Some Home Economics and Technology Achievement Standards may be offered at this level.

Internal 14	External 4	L1 Literacy	L1 Numeracy	UE Reading	UE Writing	Endorsement
<p>Prerequisites: US 167 is a pre-requisite to all the other standards that follow at Level 2</p> <p>What pathways does this subject lead to: Chef, Caterer, Food Technologist, Food Service professional, Barista, Bar manager, short-order cook, kitchen assistant, Food and Beverages servers, Baker, Meat grader, Butcher, Brewery worker, Food and Beverage Manager, Teacher, Dairy process operator, Miller, Meat inspector, Health inspector, Food counter assistant, Café/Restaurant worker</p> <p>Subject Specific Requirements: Nil</p> <p>Key Skills gained: Basic Cookery skills, Nutrition knowledge, teamwork, and communication</p>						
<i>Course relationship to the National Vocational Pathways</i>						
Construction & Infrastructure	Manufacturing & Technology	Primary Industries 4	Services Industries 18	Social & Community Services 4	Creative Industries	

* * *

Hard Materials Metal Technology – MTE200

This course is for those who wish to develop their knowledge and skills in a Metal based workshop environment. This course is delivered through engineering projects where a range of items are made using a wide variety of tools and machines. It is particularly suitable for those who may be interested in engineering related trades. There is also the opportunity to attempt some Design and Technical Drawing units of work.

Internal 24	External	L1 Literacy	L1 Numeracy	UE Reading	UE Writing	Endorsement
Prerequisites: A desire to learn and have a go at new processes What pathways does this subject lead to: Engineering Subject Specific Requirements: A willingness to try new ideas Key Skills gained: Level 2 NCEA hand and machinery skills, welding etc.						
<i>Course relationship to the National Vocational Pathways</i>						
Construction & Infrastructure	Manufacturing & Technology	Primary Industries	Services Industries	Social & Community Services	Creative Industries	

* * *

Hard Materials Metal Technology – MTE300

This course is for those who wish to build on their knowledge and skills already gained at level 2 in a metal based workshop environment. This course is delivered through engineering projects where a range of artefacts are made using an increasingly wide variety of tools and machines. It is particularly suitable for those who may be interested in engineering related trades. This course will hopefully prepare you for possible apprenticeship employment.

Internal 18	External	L1 Literacy	L1 Numeracy	UE Reading	UE Writing	Endorsement
Prerequisites: A desire to learn and have a go at new processes What pathways does this subject lead to: Engineering up to level 4 and beyond Subject Specific Requirements: A willingness to try new ideas Key Skills gained: Level 3 NCEA hand and machinery skills, welding etc.						
<i>Course relationship to the National Vocational Pathways</i>						
Construction & Infrastructure	Manufacturing & Technology	Primary Industries	Services Industries	Social & Community Services	Creative Industries	

Hard Materials Wood Technology – HMT200

This course is based primarily on workshop unit standards. Rather than focusing on any one trade, the programme will build skills and an understanding of all trades in the construction industry. BCITO standards cover skills in communication, math, health and safety and all materials knowledge. There is also the opportunity to attempt some Design and Technical Drawing units of work so you can design your own project.

Internal 24	External	L1 Literacy	L1 Numeracy	UE Reading	UE Writing	Endorsement
Prerequisites: A desire to learn and have a go at new processes What pathways does this subject lead to: Building up to Level 3 Subject Specific Requirements: A willingness to try new ideas Key Skills gained: BCITO standards at Level 2 NCEA						
<i>Course relationship to the National Vocational Pathways</i>						
Construction & Infrastructure	Manufacturing & Technology	Primary Industries	Services Industries	Social & Community Services	Creative Industries	

* * *

Hard Materials Wood Technology – HMT300

This course is based primarily on workshop unit standards. Rather than focusing on any one trade, the programme will build skills and an understanding of all trades in the construction industry. BCITO standards cover skills in communication, math, health and safety and all materials knowledge. There is also the opportunity to attempt some Design and Technical Drawing units of work so you can design your own project.

Internal 18	External 4	L1 Literacy	L1 Numeracy	UE Reading	UE Writing	Endorsement Yes
Prerequisites: A desire to learn and have a go at new processes What pathways does this subject lead to: Level 4 and beyond Subject Specific Requirements: A willingness to try new ideas Key Skills gained: Level 3 hard materials technology						
<i>Course relationship to the National Vocational Pathways</i>						
Construction & Infrastructure	Manufacturing & Technology	Primary Industries	Services Industries	Social & Community Services	Creative Industries	

Painting and Printmaking– PAI200

This is the course you have been wanting to take but have not got onto yet. Now is your chance to release your creative flare in a way that will allow you to develop and enhance those skills. We will be covering internal courses of work that lead to the external Folio board. The focus is on using painting and drawing as well as printmaking to convey meanings and understanding over several pieces of work. So what are you waiting for, sign up today!

Internal 8	External 12	L1 Literacy	L1 Numeracy	UE Reading	UE Writing	Endorsement Yes
Prerequisites: A desire to learn, Level 1 is an advantage, entry can be negotiated with HOF What pathways does this subject lead to: L3 painting, printmaking and photography Subject Specific Requirements: A willingness to try new ideas Key Skills gained: Level 2 NCEA Visual Arts and a host of out of the box thinking						
<i>Course relationship to the National Vocational Pathways</i>						
Construction & Infrastructure	Manufacturing & Technology	Primary Industries	Services Industries	Social & Community Services	Creative Industries	

* * *

Painting, and Printmaking – PAI300

The pièce de résistance, level 3 Painting and Printmaking course. We are here for the taking. We do internals and an external folio board of work worth 14 credits. We delve into why artists do what they do as well as developing further your understanding and appreciation of the Arts. You will develop a style that is unique to you. You can gain University Entrance and go onto use your skills in areas like Media, Advertising and Film. So what are you waiting for, sign up today!

Internal 8	External 14	L1 Literacy	L1 Numeracy	UE Reading	UE Writing	Endorsement Yes
Prerequisites: A desire to learn, Level 1 is an advantage, entry can be negotiated with HOF What pathways does this subject lead to: L3 painting, printmaking and photography Subject Specific Requirements: A willingness to try new ideas Key Skills gained: Level 3 NCEA in Painting/Printmaking/Photography. University Entrance						
<i>Course relationship to the National Vocational Pathways</i>						
Construction & Infrastructure	Manufacturing & Technology	Primary Industries	Services Industries	Social & Community Services	Creative Industries	

Photography – PHO200

This is the course you have been wanting to take but have not got onto yet. Now is your chance to release your creative flare in a way that will allow you to develop and enhance those skills. We will be covering internal courses of work that lead to the external Folio board. The focus, sorry about the pun, is to learn about the camera, techniques and principles to enhance your ability and understanding of photography. So what are you waiting for, sign up today!

Internal 8	External 12	L1 Literacy	L1 Numeracy	UE Reading	UE Writing	Endorsement Yes
Prerequisites: A desire to learn, Level 1 and 2 NCEA What pathways does this subject lead to: Building up to level 4 at University in Painting, Printmaking, Photography, Illustration, media design, sign writing Subject Specific Requirements: A willingness to try new ideas Key Skills gained: Level 3 NCEA in Painting/Printmaking/Photography. University Entrance						
<i>Course relationship to the National Vocational Pathways</i>						
Construction & Infrastructure	Manufacturing & Technology	Primary Industries	Services Industries	Social & Community Services	Creative Industries	

* * *

Photography – PHO300

The pièce de résistance, level 3 Photography course. We are here for the taking. We do internals and an external folio board of work worth 14 credits. We delve into why photographers do what they do as well as developing further your understanding and appreciation of photography. You will develop a style that is unique to you. You can gain University Entrance and go onto use your skills in areas like Media, Advertising and Film. So what are you waiting for, sign up today!

Internal 8	External 14	L1 Literacy	L1 Numeracy	UE Reading	UE Writing	Endorsement Yes
Prerequisites: A desire to learn, Level 1 is an advantage, entry can be negotiated with HOF What pathways does this subject lead to: L3 painting, printmaking and photography Subject Specific Requirements: A willingness to try new ideas Key Skills gained: Level 3 NCEA in Painting/Printmaking/Photography. University Entrance						
<i>Course relationship to the National Vocational Pathways</i>						
Construction & Infrastructure	Manufacturing & Technology	Primary Industries	Services Industries	Social & Community Services	Creative Industries	

English

English – ENG200

Level 2 English is a continuation of Level 1 English. We begin to explore deeper themes in literature and examine the way literature reflects and impacts society. Students will develop critical analysis skills, gain an appreciation for diverse voices and storytelling techniques. Students will build on their skills in text analysis, film study, oral language, formal and creative writing.

Internal 16	External 8	L1 Literacy	L1 Numeracy	UE Reading 8	UE Writing 6	Endorsement
Prerequisites: Level 1 English What pathways does this subject lead to: Level 3 English Subject Specific Requirements: Nil Key Skills gained: Critical analysis of texts, academic and creative writing skills, communication skills and justification skills.						
<i>Course relationship to the National Vocational Pathways</i>						
Construction & Infrastructure	Manufacturing & Technology	Primary Industries	Services Industries	Social & Community Services	Creative Industries	

* * *

English – ENG300

At Level 3 English we explore the structure of literary texts, analyse how meaning is created and perceived through the choice of literary devices. Students will develop critical analysis skills, gain an appreciation for diverse voices and storytelling techniques.

Internal 16	External 8	L1 Literacy	L1 Numeracy	UE Reading 10	UE Writing 8	Endorsement Yes
Prerequisites: Level 2 English What pathways does this subject lead to: Subject Specific Requirements: Nil Key Skills gained: Critical analysis of texts, academic and creative writing skills, communication skills and justification skills.						
<i>Course relationship to the National Vocational Pathways</i>						
Construction & Infrastructure	Manufacturing & Technology	Primary Industries	Services Industries	Social & Community Services	Creative Industries	

Mathematics

Mathematics – MAT200

This entire course is for students who are intending on taking Level 3 mathematics. Some choices will be allowed for those who do not intend to continue to Level 3 and require less credits to complete requirements for the trade industry.

Internal 9	External 8	L1 Literacy	L1 Numeracy	UE Reading	UE Writing	Endorsement
Prerequisites: 10 Level 1 credits What pathways does this subject lead to: Level 2 Maths, physiotherapy, construction, trades Subject Specific Requirements: Nil Key Skills gained: Critical analysis, critical thinking, accuracy, observation skills, analysing data						
<i>Course relationship to the National Vocational Pathways</i>						
Construction & Infrastructure	Manufacturing & Technology	Primary Industries	Services Industries	Social & Community Services	Creative Industries	

* * *

Statistics – STS200/300

This course can be taken alongside either Level 2 Maths OR Level 3 Maths. It is a course that allows students to start with Level 2 standards and then continue with Level 3 standards in the same year.

Internal 4	External 12	L1 Literacy	L1 Numeracy	UE Reading	UE Writing	Endorsement
Prerequisites: 10 Level 1 credits What pathways does this subject lead to: L2 Calculus, L2 Statistics Subject Specific Requirements: Nil Key Skills gained: Critical analysis of data, critical thinking, accuracy, observation skills						
<i>Course relationship to the National Vocational Pathways</i>						
Construction & Infrastructure	Manufacturing & Technology	Primary Industries	Services Industries	Social & Community Services	Creative Industries	

Calculus – CAL300

Students looking to study mathematics, statistics, sciences (including medical sciences), computer science, surveying, engineering, finance and business at university should take this class.

Internal 13	External 17	L1 Literacy	L1 Numeracy	UE Reading	UE Writing	Endorsement
Prerequisites: 14 Level 2 credits What pathways does this subject lead to: engineering, surveying, medical, trades and construction and architecture Subject Specific Requirements: Nil Key Skills gained: Level 3 Calculus						
<i>Course relationship to the National Vocational Pathways</i>						
Construction & Infrastructure	Manufacturing & Technology	Primary Industries	Services Industries	Social & Community Services	Creative Industries	

* * *

Science, Health, Outdoor and Physical Education

Biology – BIO200

Ākonga explore biological concepts, learn how and why things work the way they do in the natural world. Biology relates to careers in health sciences, environmental sciences, botany and animal sciences. Topics: Biological Investigations, Microscope Skills, Genetics, Animal Adaptations and Gene Expression.

Internal 10	External 8	L1 Literacy 7	L1 Numeracy 4	UE Reading	UE Writing 4	Endorsement Yes
Prerequisites: Nil What pathways does this subject lead to: Level 3 Science, Level 3 Biology Subject Specific Requirements: Students will require covered shoes to wear during practicals Key Skills gained: Working like a scientist, using a microscope, explaining connections between animal physiology and their environment, and understanding the complexities of inheritance and protein production.						
<i>Course relationship to the National Vocational Pathways</i>						
Construction & Infrastructure	Manufacturing & Technology 4	Primary Industries 18	Services Industries 10	Social & Community Services 18	Creative Industries	

* * *

Biology – BIO300

In Level 3 Biology ākonga explore a range of biological processes relating to humans, other animals and plants. Biology relates to careers in the health sciences, environmental sciences, botany and animal sciences. Topics include: Homeostasis, Human Evolution, Socio-scientific Issues, Plant and Animal Responses to the Environment, Human Manipulation of Genetics.

Internal 9	External 9	L1 Literacy 18	L1 Numeracy	UE Reading 18	UE Writing 9	Endorsement Yes
Prerequisites: Nil What pathways does this subject lead to: Biology, veterinary or health sciences Subject Specific Requirements: Nil Key Skills gained: Report writing mileage, and increased subject-specific vocabulary.						
<i>Course relationship to the National Vocational Pathways</i>						
Construction & Infrastructure	Manufacturing & Technology 6	Primary Industries 18	Services Industries	Social & Community Services 9	Creative Industries	

Chemistry – CHE200

Chemistry enables us to understand the properties of different materials and to transform materials into new and useful substances. Through chemistry, we can understand changes that we observe in the natural and physical world. Any students wishing to undertake a university course in Chemistry should take this course. Topics Include: Organic Chemistry, Structure and Bonding, Redox, Identifying Ions in Solution, and Quantitative Analysis.

Internal 10	External 9	L1 Literacy 9	L1 Numeracy 4	UE Reading	UE Writing	Endorsement Yes
Prerequisites: Nil What pathways does this subject lead to: Level 3 Chemistry and/or Science Subject Specific Requirements: Students will required covered shoes to wear during practicals Key Skills gained: Investigative and practical skills using chemistry-specific lab equipment.						
<i>Course relationship to the National Vocational Pathways</i>						
Construction & Infrastructure 19	Manufacturing & Technology 19	Primary Industries 19	Services Industries 11	Social & Community Services 12	Creative Industries	

* * *

Chemistry – CHE300

Through chemistry, we can understand changes that we observe in the natural and physical world. Chemistry gives us an understanding on which to base educated choices about consumer products and the management of resources. Any students wishing to undertake a university course in Chemistry should take this course. Topics Include: Properties and Thermodynamics, Organic Chemistry, Equilibria, Redox and Spectroscopy.

Internal 10	External 10	L1 Literacy 17	L1 Numeracy 4	UE Reading	UE Writing	Endorsement Yes
Prerequisites: Level 2 Chemistry recommended What pathways does this subject lead to: Medicine, nursing, research chemist, market and project management, environmental science, horticulture, engineering, health and forensic sciences Subject Specific Requirements: Students will required covered shoes to wear during practicals Key Skills gained: Investigative and practical skills using chemistry-specific lab equipment.						
<i>Course relationship to the National Vocational Pathways</i>						
Construction & Infrastructure 20	Manufacturing & Technology 20	Primary Industries 20	Services Industries 5	Social & Community Services 20	Creative Industries	

Science – SCI200

This is a general science course designed to meet the needs and interests of the students. Do you want to do a bit of each Science? Do you enjoy Science in general but don't want to do a full year of Biology, Chemistry or Physics? Is Science useful for your career pathway? Then this is the course for you! Topics are flexible and aim to include 6 internals throughout the year for approximately 20-24 credits.

Internal 20-24	External	L1 Literacy 8	L1 Numeracy 4	UE Reading 4	UE Writing	Endorsement No
Prerequisites: Nil What pathways does this subject lead to: Level 3 Science Subject Specific Requirements: Students will required covered shoes to wear during practicals Key Skills gained: Carrying out science investigations, research and essay writing skills. Increased fluency with science vocabulary and conventions						
<i>Course relationship to the National Vocational Pathways</i>						
Construction & Infrastructure 11	Manufacturing & Technology 3	Primary Industries 11	Services Industries 3	Social & Community Services	Creative Industries	

* * *

Science – SCI300

Do you enjoy Science but don't want to do a full year of Biology, Chemistry or Physics? Then this general science course is for you! Topics are flexible and will be changed to meet the needs of the class and individuals with an aim of 6 internals throughout the year for approximately 18-20 credits. Some of these standards have UE literacy, and this can be structured to count as a UE-approved subject.

Internal 18-20	External	L1 Literacy	L1 Numeracy	UE Reading 15	UE Writing	Endorsement No
Prerequisites: Nil What pathways does this subject lead to: Level 3 Science Subject Specific Requirements: Students will required covered shoes to wear during practicals Key Skills gained: Carrying out science investigations, research and essay writing skills. Increased fluency with science vocabulary and conventions						
<i>Course relationship to the National Vocational Pathways</i>						
Construction & Infrastructure 15	Manufacturing & Technology 7	Primary Industries 7	Services Industries	Social & Community Services 7	Creative Industries	

Physics – PHY200

Physics helps us understand why things in the natural world happen the way they do. It enables us to explain how buildings move in an earthquake, why a car takes as long as it does to come to a stop when the brakes are applied and why the sky is blue. Topics Include: Physics Investigation, Atomic and Nuclear Physics, Mechanics, Waves

Internal 10	External 10	L1 Literacy 20	L1 Numeracy 14	UE Reading	UE Writing	Endorsement Yes
Prerequisites: Level 1 Science recommended What pathways does this subject lead to: Level 3 physics, electrician Subject Specific Requirements: Some competency in maths, especially algebra and geometry Key Skills gained: Problem solving using algebra and geometry, subject-specific vocabulary						
<i>Course relationship to the National Vocational Pathways</i>						
Construction & Infrastructure 17	Manufacturing & Technology 20	Primary Industries 17	Services Industries	Social & Community Services 16	Creative Industries 3	

* * *

Physics – PHY300

Physicists – and students studying physics - are able to use their understanding to predict how an object will behave under particular conditions and improve the functioning of everyday objects. Physics at Level 3 builds on Level 2. Topics include: Physics Investigation, Physics Socio-issue, Modern Physics, Mechanical Systems and Waves.

Internal 10	External 10	L1 Literacy 17	L1 Numeracy	UE Reading 3	UE Writing	Endorsement Yes
Prerequisites: Level 2 Physics What pathways does this subject lead to: Tertiary studies, electrician Subject Specific Requirements: Some competency in maths, especially algebra and geometry Key Skills gained: Problem-solving using algebra and geometry, subject-specific vocabulary						
<i>Course relationship to the National Vocational Pathways</i>						
Construction & Infrastructure 20	Manufacturing & Technology 20	Primary Industries 20	Services Industries 5	Social & Community Services 20	Creative Industries	

Outdoor Education – OED200/300

Outdoor Education aims to provide students with the opportunity to engage in hands-on challenging activities. Students will learn how to participate safely in outdoor activities while learning how to be prepared and manage themselves while in a variety of settings. Safety is priority one and in any situation where the risk is too high the activity will be postponed or cancelled.

Topics may include: Rock Climbing, Caving, Canyoning, Mountain Biking, Tramping, Kayaking, High/Low Ropes, First Aid, Overnight Camps, Movement Skills, Teamwork & Cooperation, Self Management, Risk Assessment.

Internal 20+	External 10	L1 Literacy 17	L1 Numeracy	UE Reading 3	UE Writing	Endorsement Yes
Prerequisites: Level 1 OED or PE What pathways does this subject lead to: Level 3 OED Parental Contribution: Food for trips and camps Key Skills gained: Self-management, risk identification and minimisation, movement strategies, kotahitanga promotion, hauora impacts from movement. Gear requirements: Thermals, beanie, rain jacket, sun hat, woollen socks, fleece. Days out of school: 15+						
<i>Course relationship to the National Vocational Pathways</i>						
Construction & Infrastructure	Manufacturing & Technology	Primary Industries	Services Industries 7	Social & Community Services	Creative Industries 9	

* * *

Physical Education – PED200

70/30 split between theory and practical within the course, please come prepared to be in a classroom gaining and applying knowledge. Embark on a learning journey where theory takes the lead. Master the Haka and the art of social responsibility before putting your knowledge into action, fostering a deeper understanding and awareness. Topics may include: Performance in an activity/sport, leadership strategies, group processes, Haka, and social responsibility. Final topics will be decided in consultation with the class.

Internal 14	External	L1 Literacy	L1 Numeracy	UE Reading	UE Writing Yes	Endorsement Yes
Prerequisites: PED100 What pathways does this subject lead to: PED300 Subject Specific Requirements: Nil Key Skills gained: Self-management, understanding training principles and movement strategies, understanding and demonstrating good social responsibility.						
<i>Course relationship to the National Vocational Pathways</i>						
Construction & Infrastructure	Manufacturing & Technology	Primary Industries	Services Industries 12	Social & Community Services 4	Creative Industries 8	

* * *

Physical Education – PED300

Understand the fundamentals of lifelong wellbeing before putting the theory into action in PED300. Develop a solid understanding of movement, health, and sports, empowering you to excel and achieve your best in whatever endeavour you take on next.

Internal 14	External	L1 Literacy	L1 Numeracy	UE Reading	UE Writing Yes	Endorsement Yes
Prerequisites: PED200 What pathways does this subject lead to: Tertiary level diploma or degree Subject Specific Requirements: Nil Key Skills gained: Self-management, understanding training principles and movement strategies, understanding and applying different kinds of leadership in a movement-based setting.						
<i>Course relationship to the National Vocational Pathways</i>						
Construction & Infrastructure	Manufacturing & Technology	Primary Industries	Services Industries 12	Social & Community Services 4	Creative Industries 8	

Social Sciences and Languages

Classics – CLA200

Explore the wonders of Classical Studies and immerse yourself in Greek Mythology, Ancient Greece, and Ancient Rome. Delve into epic tales like Hannibal's journey across the Alps, the fall of Troy, and the saga of Mark Antony and Cleopatra. Gain valuable insights into how this remarkable era shaped our modern world.

Internal 10-15	External 5+	L1 Literacy 10+	L1 Numeracy	UE Reading 5	UE Writing 5	Endorsement Yes
Prerequisites: Nil What pathways does this subject lead to: Historian, Public Service, Education, Commerce, Retail, Research, Analyst, Social Work, Journalism, Communications, Law Subject Specific Requirements: Nil Key Skills gained: Communication, analytical and arguing skills, source interpretation						
<i>Course relationship to the National Vocational Pathways</i>						
Construction & Infrastructure	Manufacturing & Technology	Primary Industries	Services Industries	Social & Community Services	Creative Industries	

* * *

Classics – CLA300

At Level 3, the definitive focus in Classical Studies is Roman History. Learn about Julius Caesar, the madness of Emperor Nero, the Roman invasion of Britain and the Roman- Jewish wars. This is a University Entrance course. This subject is also part of the Video Conference programme, studying alongside student across Aotearoa.

Internal 10+	External 5+	L1 Literacy 10+	L1 Numeracy	UE Reading 10+	UE Writing 6+	Endorsement Yes
Prerequisites: Nil What pathways does this subject lead to: Historian, Public Service, Education, Commerce, Retail, Research, Analyst, Social Work, Journalism, Communications, Law Subject Specific Requirements: Nil Key Skills gained: Communication, analytical and arguing skills, source interpretation						
<i>Course relationship to the National Vocational Pathways</i>						
Construction & Infrastructure	Manufacturing & Technology	Primary Industries	Services Industries	Social & Community Services	Creative Industries	

History – HIS200

Discover the allure of history, learning about past events in Aotearoa New Zealand and the World. Previous student-choice options have seen us explore the First Holy Crusade, Vietnam War, and Cold War. Embrace the fascinating journey through our world's past whilst improving your communication and analysis skills. . Choose history and unlock the secrets of the people of the past.

Internal 10+	External 5+	L1 Literacy 10+	L1 Numeracy	UE Reading 10	UE Writing 5	Endorsement Yes
Prerequisites: Nil What pathways does this subject lead to: Historian, Public Service, Education, Commerce, Retail, Research, Analyst, Social Work, Journalism, Communications, Law Subject Specific Requirements: Nil Key Skills gained: Communication, analytical and arguing skills, source interpretation						
<i>Course relationship to the National Vocational Pathways</i>						
Construction & Infrastructure	Manufacturing & Technology	Primary Industries	Services Industries	Social & Community Services	Creative Industries	

* * *

History – HIS300

Embark on a captivating journey through New Zealand and Polynesian History at Level 3. Delve into pre-1840 events, with a special focus on the Musket Wars and Hongi Hika's invasion of the central North Island. This subject offers a fantastic chance to hone your communication skills, earn credits, and secure University Entrance. Engage with historical sites and expert perspectives to enrich your understanding of the fascinating tapestry of New Zealand History.

Internal 10+	External 5+	L1 Literacy 10+	L1 Numeracy	UE Reading 10+	UE Writing 10+	Endorsement Yes
Prerequisites: Nil What pathways does this subject lead to: Historian, Public Service, Education, Commerce, Retail, Research, Analyst, Social Work, Journalism, Communications, Law Subject Specific Requirements: Nil Key Skills gained: Communication, analytical and arguing skills, source interpretation						
<i>Course relationship to the National Vocational Pathways</i>						
Construction & Infrastructure	Manufacturing & Technology	Primary Industries	Services Industries	Social & Comm Services	Creative Industries	

Humanities – HUM200 (NEW, replacing Geography)

Explore the world through diverse lenses in our Humanities course. Integrating Social Studies, Geography, and other Social Sciences, students can study issues such as youth crime, gun control, climate change, social justice, urbanization and human trafficking. Empower yourself to comprehend the world's complexities, gaining insights and understanding through multifaceted discussions and explorations.

Internal 18	External 5	L1 Literacy 10	L1 Numeracy 5	UE Reading 8	UE Writing	Endorsement Yes
Prerequisites: Nil What pathways does this subject lead to: Public Service, Education, Commerce, Retail, Research, Analyst, Social Work, Journalism, Communications, Law Subject Specific Requirements: Nil Key Skills gained: Critical thinking and analytical skills, using source of information, constructing arguments, interpreting sources, writing to communicate						
<i>Course relationship to the National Vocational Pathways</i>						
Construction & Infrastructure	Manufacturing & Technology	Primary Industries	Services Industries	Social & Community Services	Creative Industries	

* * *

Humanities – HUM300 (NEW, replacing Geography)

Embark on an intellectually stimulating journey with Humanities—a captivating blend of Senior Social Studies, Geography, and other Social Sciences. Immerse yourself in thought-provoking contexts, delving into New Zealand's housing crisis, gun control laws, inequity, poverty, global water scarcity, and human trafficking. Expand your horizons and engage in meaningful discussions that shape a deep understanding of our ever-changing world.

Internal 16	External 5	L1 Literacy 5	L1 Numeracy 5	UE Reading 5	UE Writing 4	Endorsement Yes
Prerequisites: Nil What pathways does this subject lead to: Public Service, Education, Commerce, Retail, Research, Analyst, Social Work, Journalism, Communications, Law Subject Specific Requirements: Nil Key Skills gained: Critical thinking and analytical skills, using source of information, constructing arguments, interpreting sources, writing to communicate						
<i>Course relationship to the National Vocational Pathways</i>						
Construction & Infrastructure	Manufacturing & Technology	Primary Industries	Services Industries	Social & Comm Services	Creative Industries	

Tourism – TOU200

Embark on an exciting journey with our Vocational Tourism course, designed to expand your horizons in the dynamic tourism industry and global destinations. Discover the beauty of Aotearoa's key places while grasping industry insights and job expectations. Experience the freedom to progress at your pace, as this course is based on Unit Standards. Get ready to unlock a world of opportunities and create unforgettable memories in the realm of Tourism. Join us and let your wanderlust soar!

Internal 15	External	L1 Literacy	L1 Numeracy	UE Reading	UE Writing	Endorsement
Prerequisites: Nil What pathways does this subject lead to: Tourism, Public Service, Retail, Hospitality, Adventure Tourism, Transportation, Communications Subject Specific Requirements: Nil Key Skills gained: Communication skills, work readiness, employment skills						
<i>Course relationship to the National Vocational Pathways</i>						
Construction & Infrastructure	Manufacturing & Technology	Primary Industries	Services Industries	Social & Comm Services	Creative Industries	

* * *

Tourism – TOU300

Embark on an exhilarating journey with our Vocational Tourism course, where we explore the captivating realms of New Zealand, the Pacific, and Australia. Immerse yourself in the allure of key destinations while honing skills vital for this dynamic industry. You are able to work at your own pace due to the Unit Standard nature of this course. Join us to unlock the door to a thriving sector!

Internal 15+	External	L1 Literacy	L1 Numeracy	UE Reading	UE Writing	Endorsement
Prerequisites: Nil What pathways does this subject lead to: Tourism, Public Service, Retail, Hospitality, Adventure Tourism, Transportation, Communications Subject Specific Requirements: Nil Key Skills gained: Communication skills, work readiness, employment skills						
<i>Course relationship to the National Vocational Pathways</i>						
Construction & Infrastructure	Manufacturing & Technology	Primary Industries	Services Industries	Social & Comm Services	Creative Industries	

Te Reo Māori – MAO200

Nau mai ki tēnei akomanga, ko Te Pakaritanga A (Māori200 -NCEA Level Two). Kia mau, kia ita, kia ū ki ngā mahi a ō tātou tupuna, ara, ko te reo Māori me ngā Tikanga. The purpose of this course is to develop the knowledge of te reo Māori me ngā Tikanga. A strong focus will be on building confidence to use te reo Māori of the exploring world.

Internal 16	External 12	L1 Literacy 12	L1 Numeracy	UE Reading 6	UE Writing 12	Endorsement Yes
Prerequisites: Level 1 Te Reo Māori What pathways does this subject lead to: Level 3 Te Reo Māori Subject Specific Requirements: Nil Key Skills gained: Developing the use of a wide range of sentence structures with confidence building on knowledge of Aotearoa history e.g.: people, place, events of our area; topic specific vocabulary						
<i>Course relationship to the National Vocational Pathways</i>						
Construction & Infrastructure	Manufacturing & Technology	Primary Industries	Services Industries	Social & Comm Services	Creative Industries	

* * *

Te Reo Māori – MAO300

Nau mai ki tēnei akomanga, ko Te Pakaritanga E (Māori300 -NCEA Level Three). Kia mau, kia ita, kia ū ki ngā mahi a ō tātou tupuna, ara, ko te reo Māori me ngā Tikanga. The purpose of this course is to encourage excellence in listening, reading and writing in te reo Māori. A strong focus will be on building confidence to use te reo Māori of the wider world.

Internal	External	L1 Literacy	L1 Numeracy	UE Reading	UE Writing	Endorsement
Prerequisites: Level 2 Te Reo Māori What pathways does this subject lead to: Te Reo Māori at tertiary level, Level 4 Te Reo Māori, Te Reo Rangatira Subject Specific Requirements: Nil Key Skills gained: Confidence in reading, speaking and writing in Te Reo Māori; comparing indigenous histories e.g.: people, place, events of our area; topic specific vocabulary						
<i>Course relationship to the National Vocational Pathways</i>						
Construction & Infrastructure	Manufacturing & Technology	Primary Industries	Services Industries	Social & Comm Services	Creative Industries	

